



ANTENNA EXPERTS

E-mail: info@antennaexperts.in Website: www.antennaexperts.in

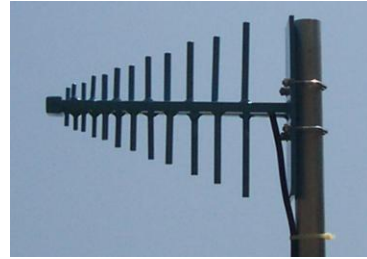
LP-700-2500

700 – 2500 MHz.

9 dBi. Gain

MULTI BAND LOG PERIODIC ANTENNA

DESIGN FEATURES: The LP-700-2500 multi band log periodic antenna is designed to provide wideband directional transmission/reception of radio signals from 700 to 2500 MHz bands which includes GSM, EGSM, CDMA, WCDMA, AMPS, UMTS, ISM and DECT applications. The compact size of the log periodic antenna allows easy handling and specially designed mounting arrangement results in fast installation.



CONSTRUCTIONS: The multi band log periodic antenna is supplied complete in assembled condition. Output of log periodic antenna is provided via one 50 Ohms coaxial cable at the back end of the antenna boom. The log periodic antenna operates at D.C. ground with low resistance discharge path for protection against lightning and for immunity to noise. This log periodic dipole antenna system has particular suitable for Tx/Rx or monitoring purpose. All the screws, nuts and bolts of log periodic dipole antenna are made of stainless steel.

ELECTRICAL SPECIFICATIONS:

Frequency Range	700 - 2500 MHz.
Gain	9 dBi.
Bandwidth	Entire Band
Polarization	Vertical or Horizontal
Input Impedance	50 Ohms
Radiation Pattern	Directional
Horizontal Beam width – Half Power Points	65 Degrees
Front to Back Ratio	18 dB.
VSWR	2:1
RF Power Handling Capacity	150 Watts
Input Termination	N-Female
Lightning Protection	Direct Ground

MECHANICAL SPECIFICATIONS:

Materials	All Aluminum
Mounting Hardware -Materials	Stainless Steel
Wind Rating	200 Km/Hr.
Overall Length	350 mm
Shipping Length	360 mm
Support Boom - Materials	Aluminum - Square Tube
Elements - Materials	Aluminum - Round Rod
Insulator Material	Teflon
Mounting Clamps Position	At the back end of antenna
Maximum Mount Pipe Diameter	51 mm (2 Inches)
Gross Weight	0.9 Kg.

ENVIRONMENTAL SPECIFICATIONS:

Operating Temperature	(-)30 to +70 Degrees Celsius
Storage Temperature	(-)40 to +80 Degrees Celsius
Humidity	0 to 95% RH